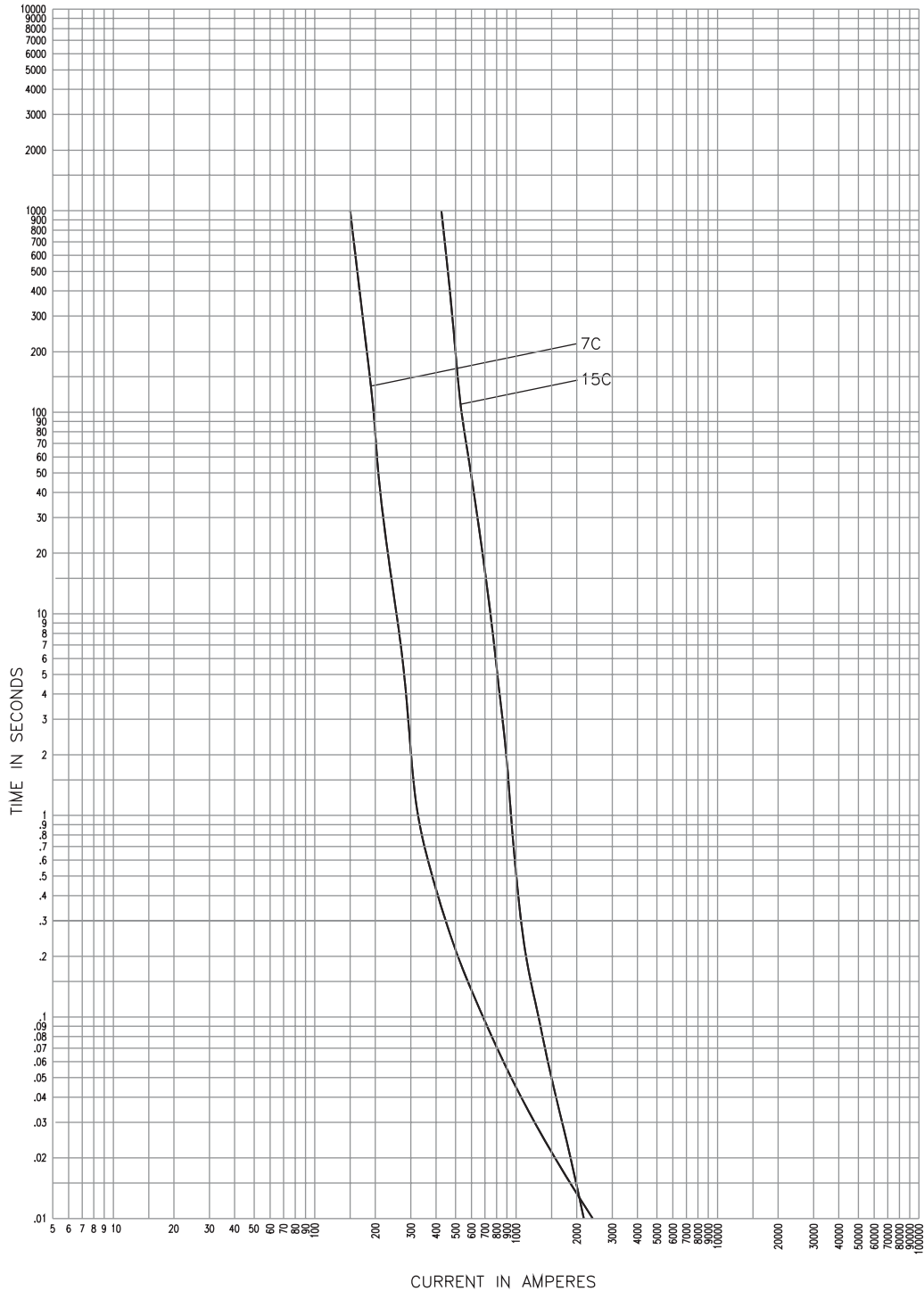


15CX



Type CX General Purpose Current-Limiting Fuses.  
 Total Clearing Time-Current Characteristics -15.5 kV  
 Curves are based on tests starting with fuse unit at ambient temperature of 25 C and without initial load. Curves are plotted to maximum test points so all variations should be negative.

CURVE 70544802  
 October 2000  
 Reference # 666793,  
 666904

Figure 7-29. Curve Number 70544802